

[V2] SMARTRISE PARAMETERS

→ DOWNLOAD/UPLOAD
INSTRUCTIONS ←

VERSION 1.0



Document History

| Date | Version | Summary of Changes |
|-------------------|----------------|---------------------------|
| February 24, 2025 | 1.0 | Initial Release |

| | | |
|----------|----------------------------------------------|----------|
| 1 | Overview..... | 1 |
| 2 | Parameter Download Instructions | 1 |
| 3 | Parameter Upload Instructions | 5 |

Page intentionally left blank.

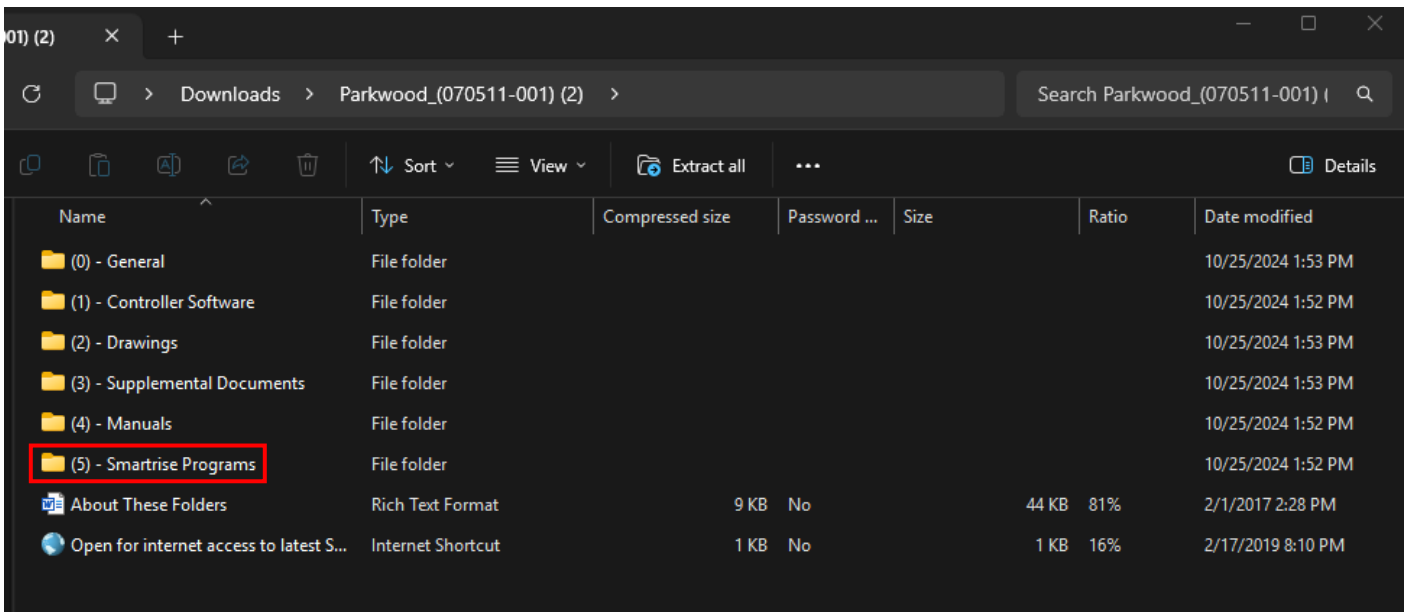
1 Overview

This document provides step-by-step instructions for downloading, installing, and using the Smartrise Parameters program with V2 controllers. It outlines the process for reading and saving parameters from the V2 controller, as well as uploading saved parameters back to the controller. Following these instructions ensures accurate configuration and parameter management for Smartrise systems.

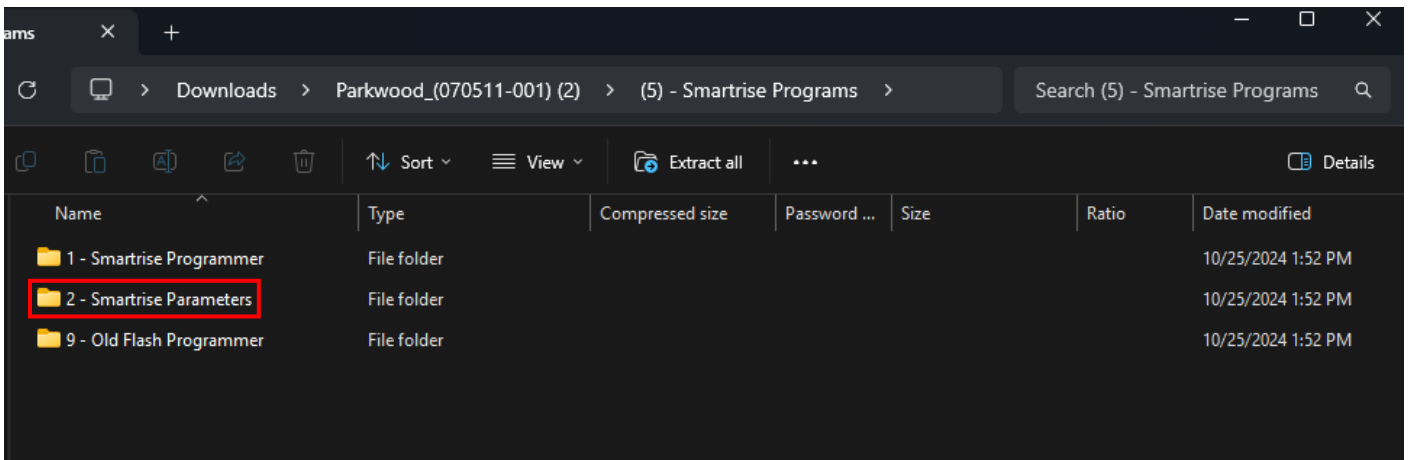
2 Parameter Download Instructions

Perform the following steps to download the parameters from the controller:

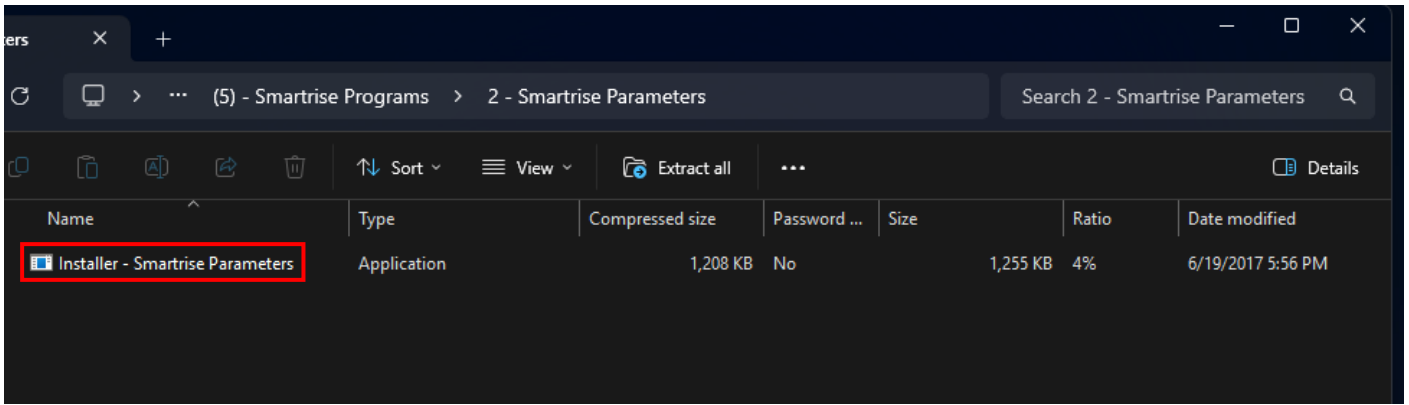
1. Download the job link provided by email.
2. Once download is complete, extract the folder, navigate to folder **(5) Smartrise Programs**.



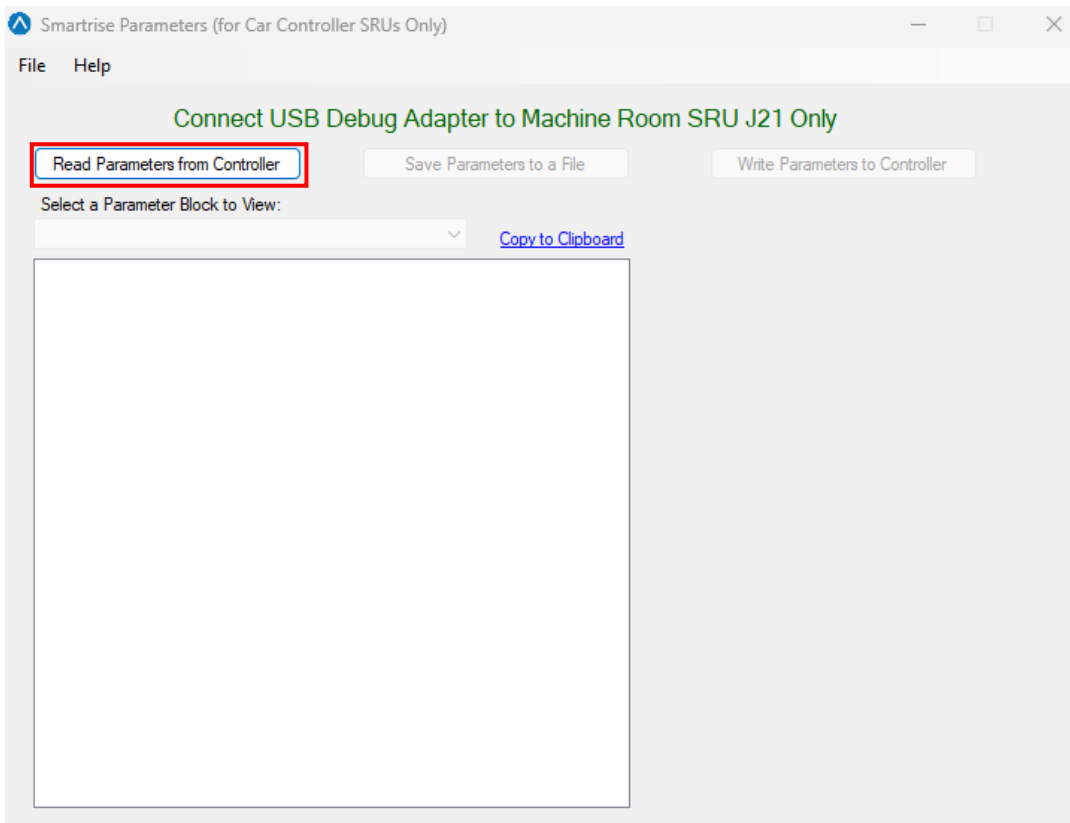
3. Open folder **2 – Smartrise Parameters**.



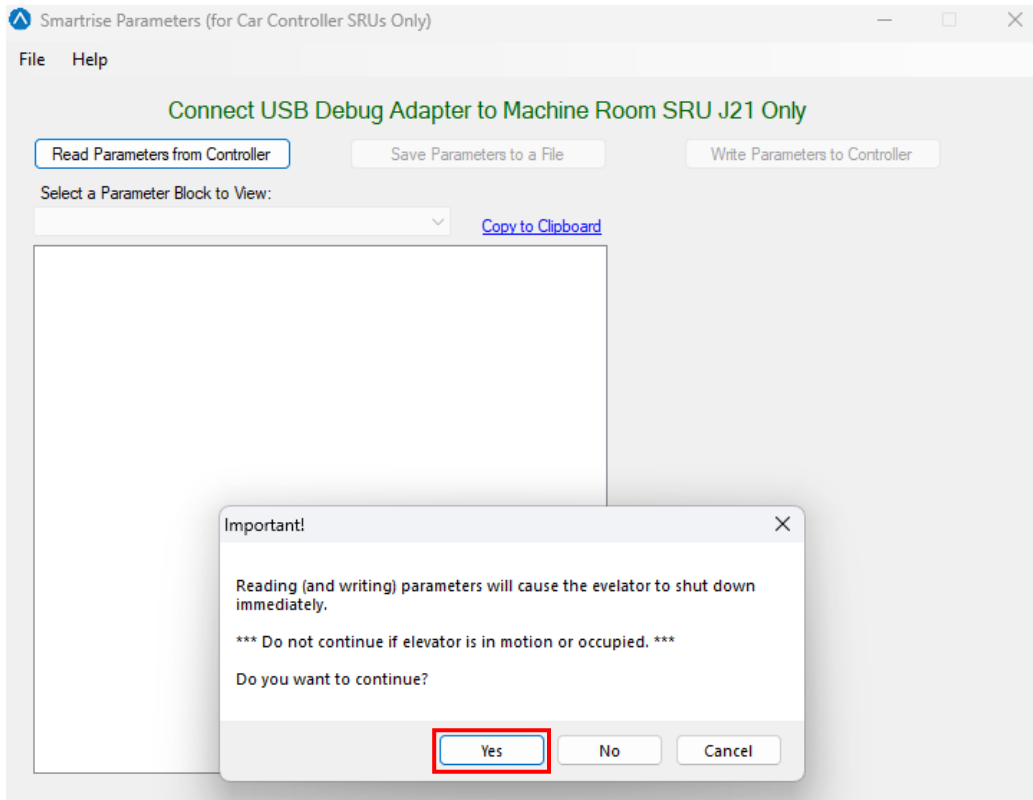
4. Double-click on the **Installer – Smartrise Parameters.exe** and follow the on-screen prompts for Windows installation.



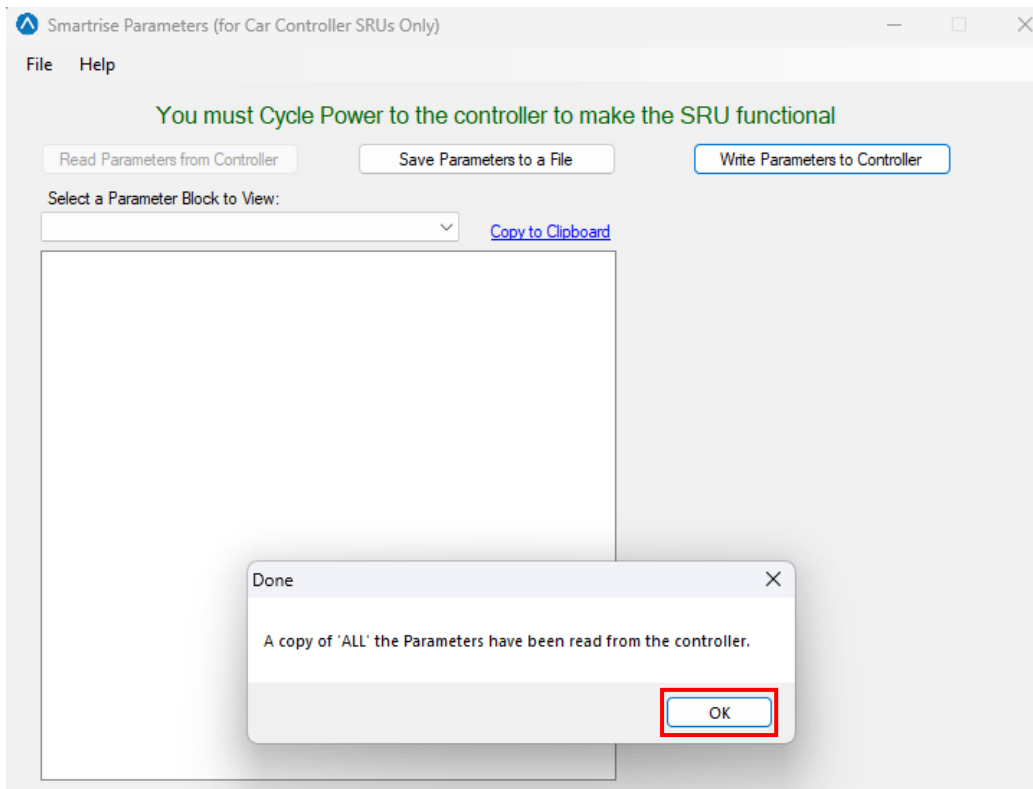
5. Once installed, launch the program.
6. Connect the debug adapter to the MR SRU J21 port.
7. Click on **Read Parameters from Controller**.



8. A warning message will appear. Click **Yes** when it is safe to proceed.

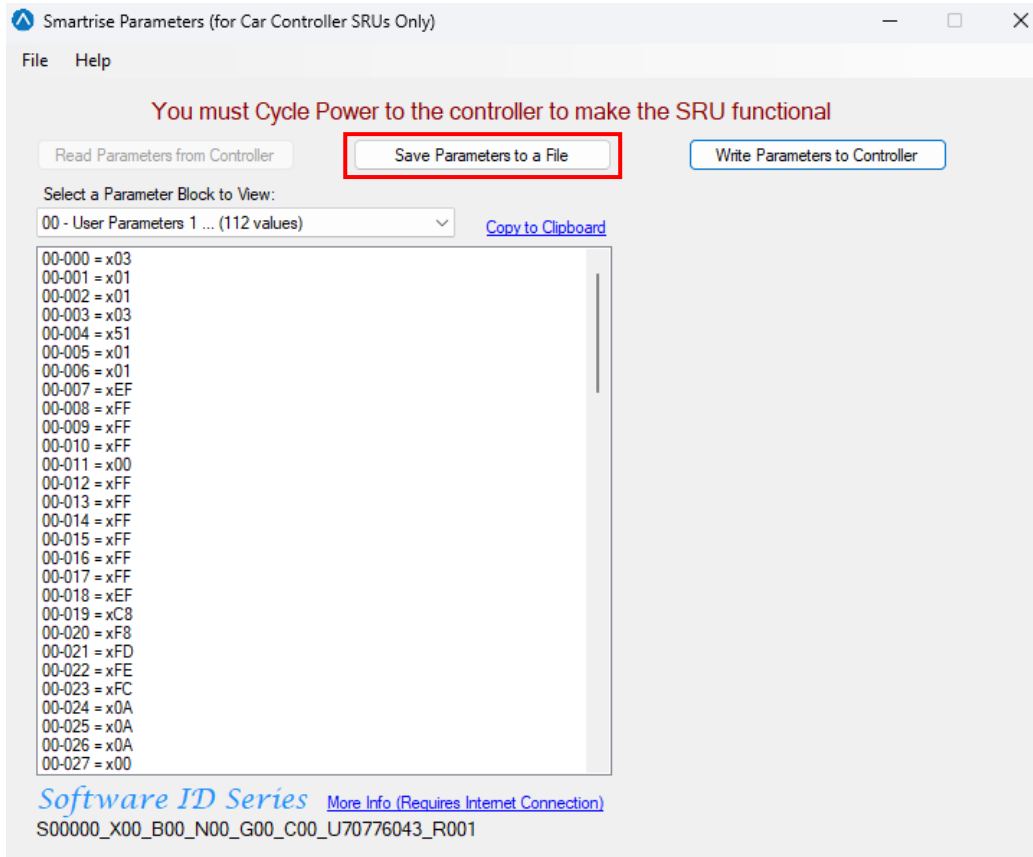


9. After the parameters have been downloaded, click **OK**.

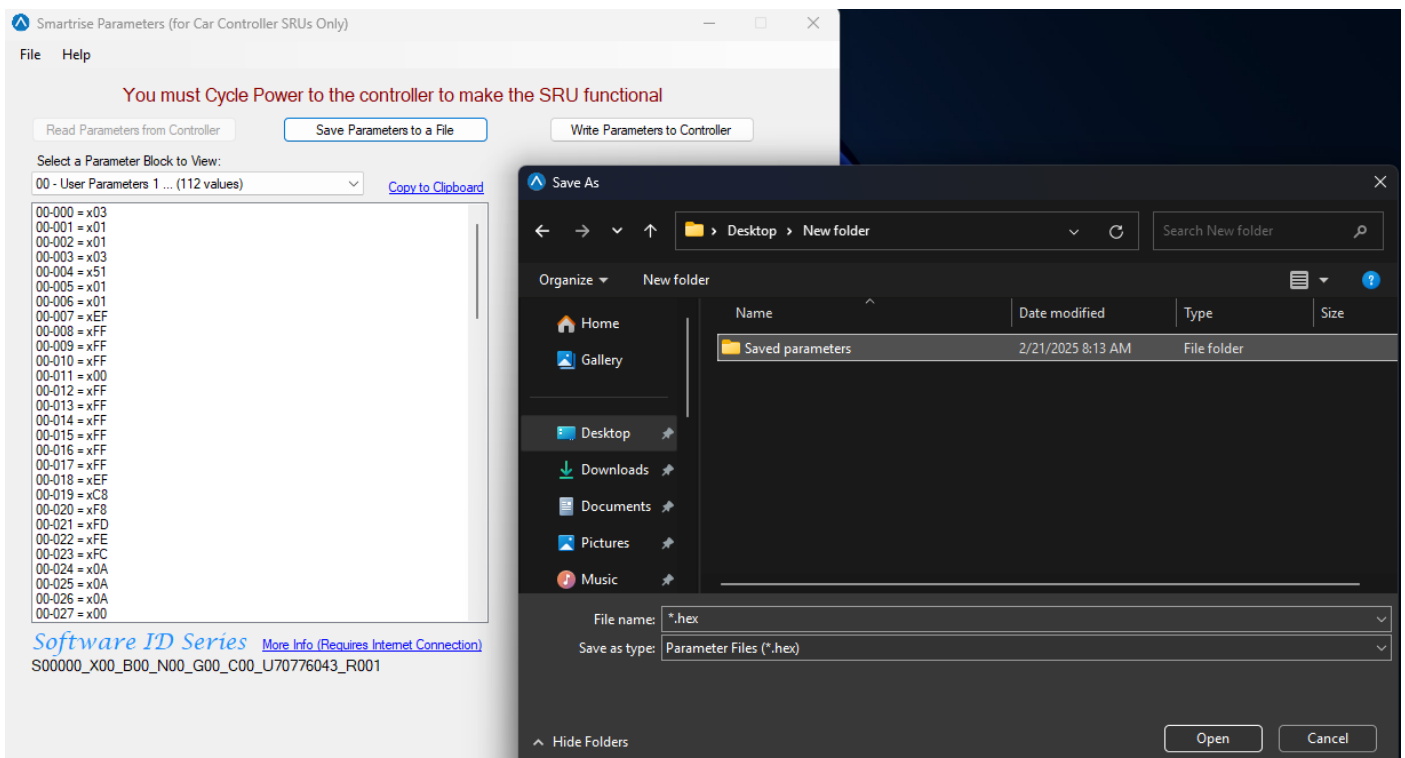


10. The parameter list will be displayed.

11. Save a copy of the downloaded parameters to a laptop or USB drive by clicking **Save Parameters to a File**.



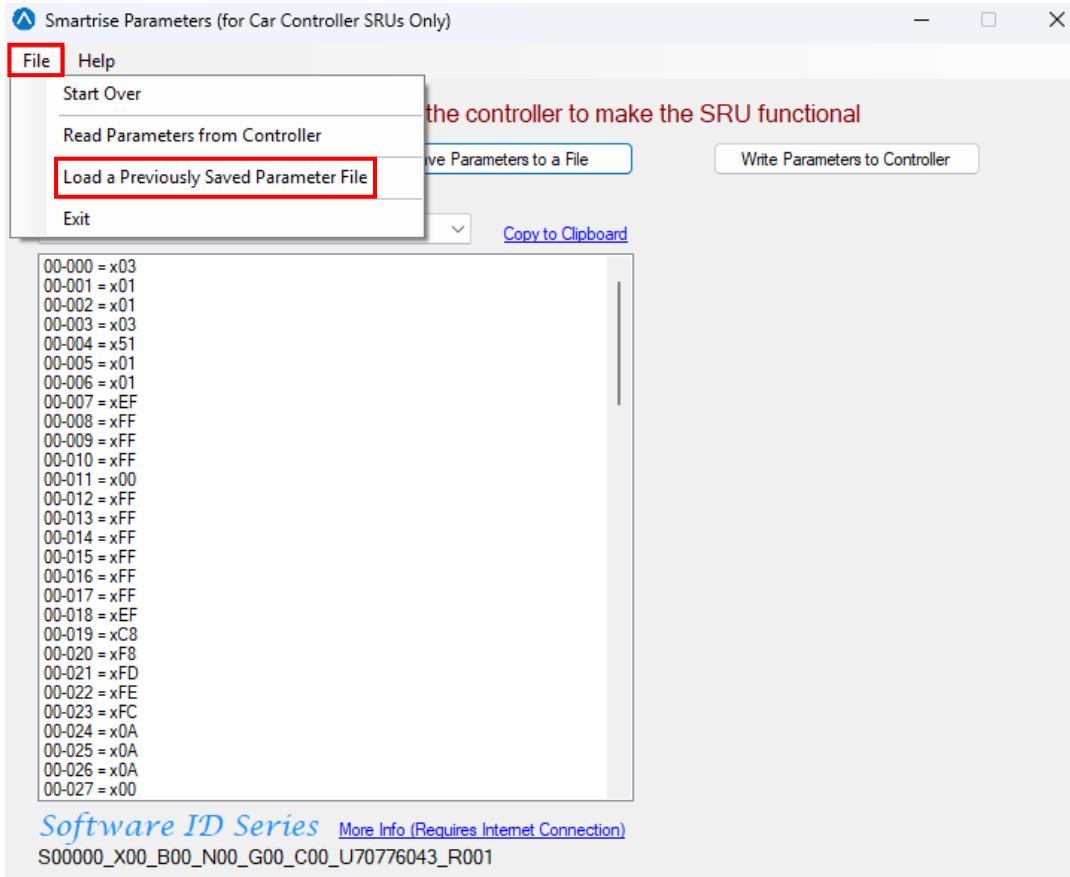
12. Select a directory for saving the file and rename the “*.hex” file to a recognizable name while keeping the “.hex” file extension.



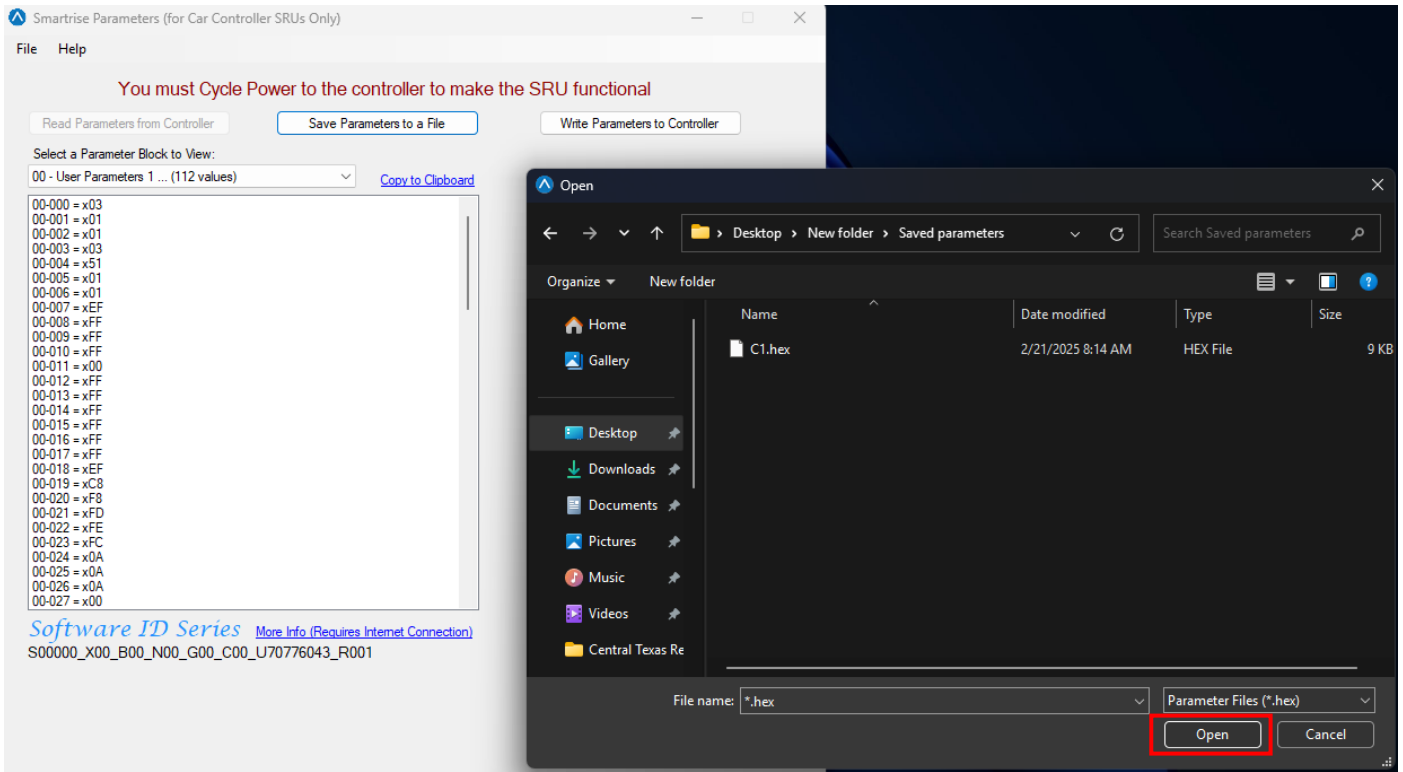
3 Parameter Upload Instructions

Perform the following steps to upload the parameters to the controller:

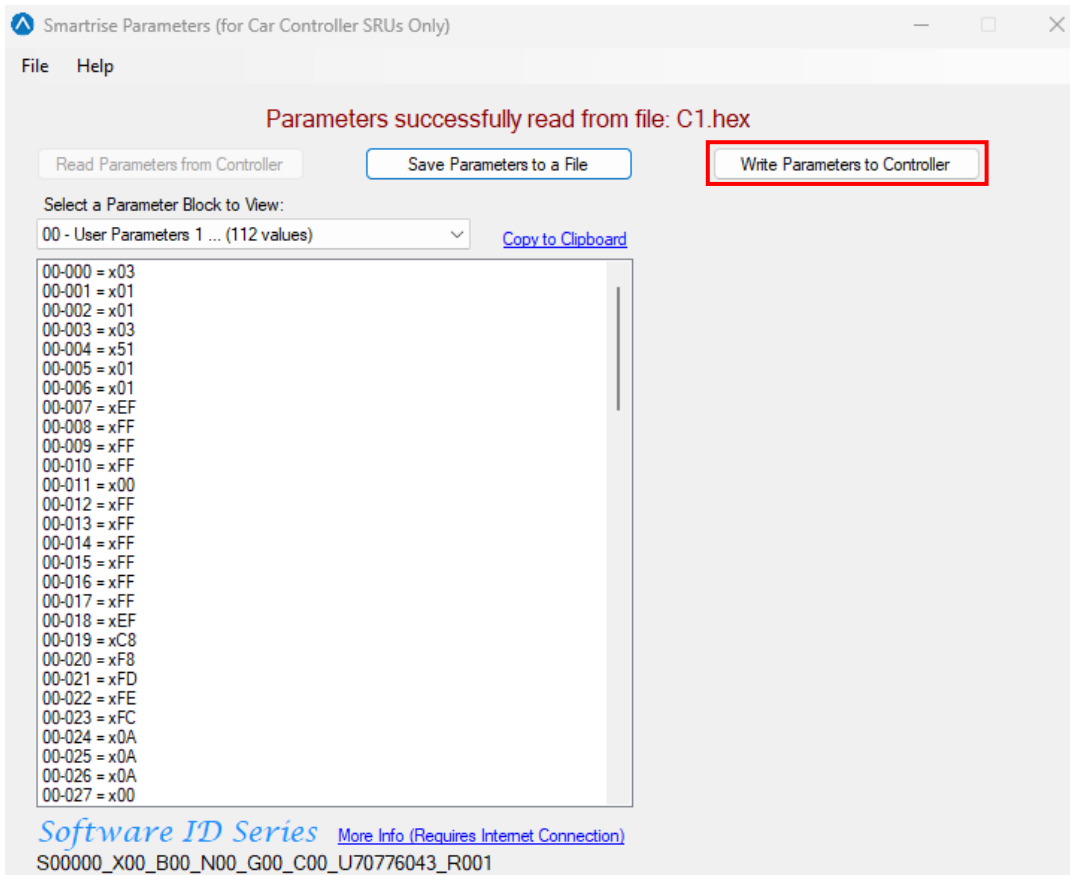
1. Open the Smartrise Parameters program.
2. Click on **File** and select **Load a Previously Saved Parameter File**.



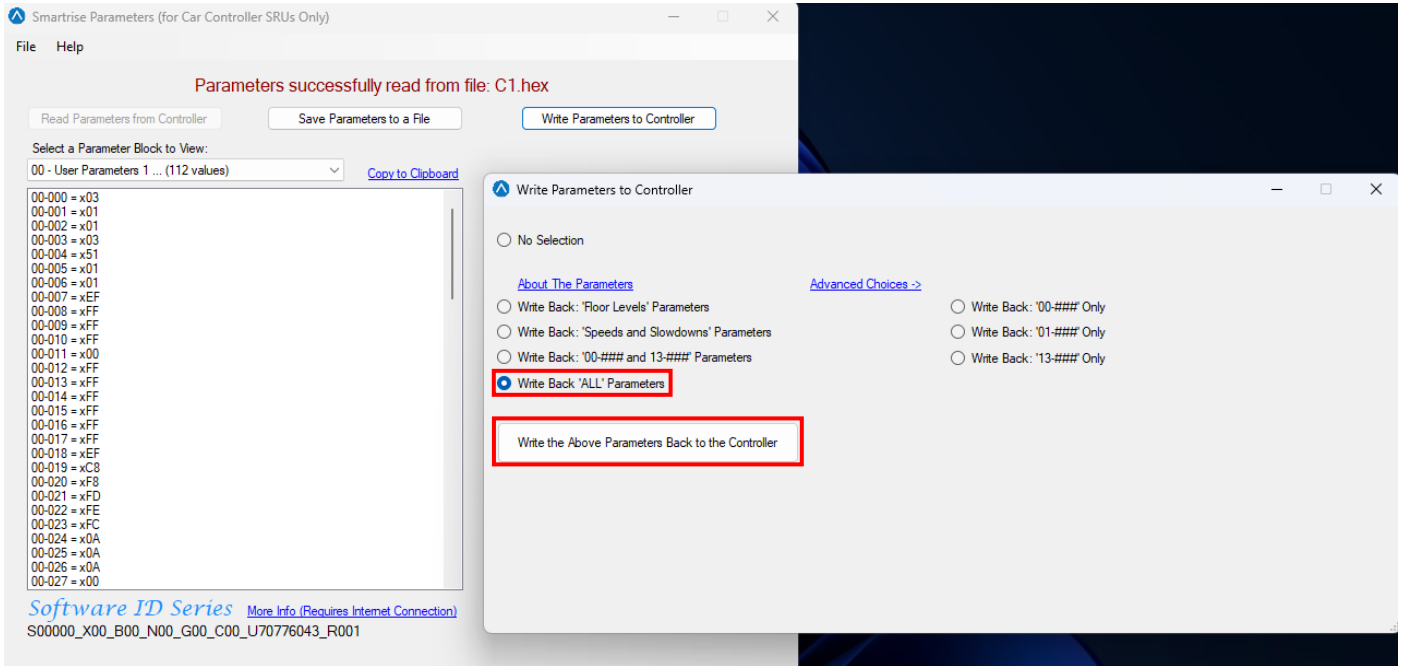
3. Navigate to the location where the .hex file was saved (from step 12) and click **Open**.



- 4. The parameters will load into the program.
- 5. Click on **Write Parameters to Controller**.



- A window will appear prompting parameter selection.
- Select **Write Back 'ALL' Parameters** and click **Write the Above Parameters Back to the Controller**.



- Power cycle the machine room board using the M24 circuit breaker (no need to shut down the entire controller).